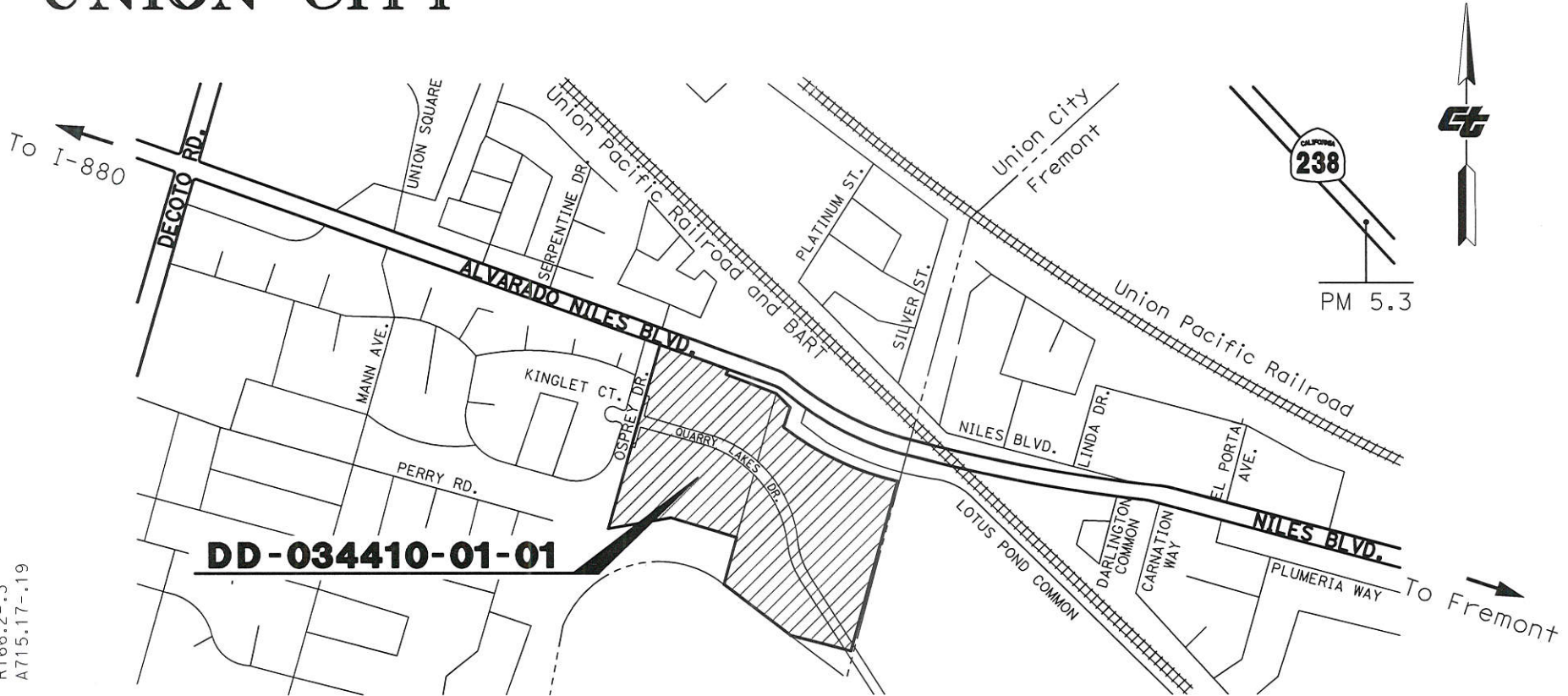


# COUNTY OF ALAMEDA UNION CITY

NOTE: The State of California or its officers or agents shall not be responsible for the accuracy or completeness of digital images of this map.



R166.2-.3  
A715.17-.19

**DD-034410-01-01**

## VICINITY MAP

*John A. Cardarelli*  
John A. Cardarelli  
9-23-19  
Date



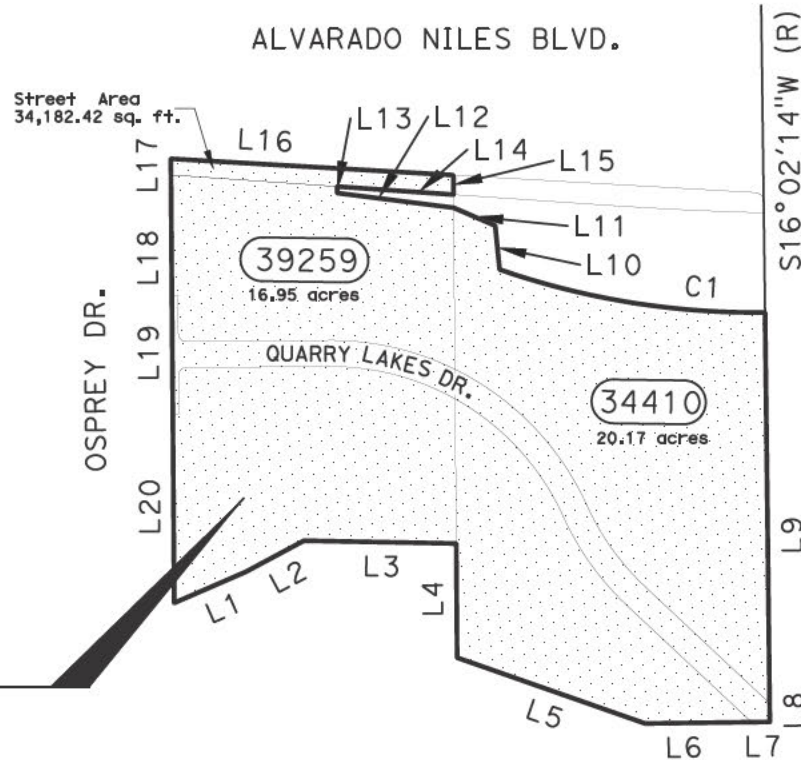
NOTES	LEGEND
Coordinates and bearings are on CCS 1927 Zone III. Distances and stationing are grid distances. Multiply by 1.0000668 to obtain ground distances. All distances are in feet unless otherwise noted.	PM Postmile (R) Radial Bearing Bk Book/Reel/Vol Pg Page/Image

STATE OF CALIFORNIA  
CALIFORNIA STATE TRANSPORTATION AGENCY  
DEPARTMENT OF TRANSPORTATION  
**RIGHT OF WAY  
EXHIBIT "B" MAP**  
**DD-034410-01-01**  
COPYRIGHT 2019 CALIFORNIA DEPARTMENT OF TRANSPORTATION.  
ALL RIGHTS RESERVED.  
SCALE: 1" = 100'

DRAFTED BY	DATE	DISTRICT	COUNTY	ROUTE	SHEET PM	SHEET NO.	TOTAL SHEETS
SKR	09/05/2019	04	ALA	238	5.9x	1	3

# COUNTY OF ALAMEDA UNION CITY

NOTE: The State of California or its officers or agents shall not be responsible for the accuracy or completeness of digital images of this map.



**DD-034410-01-01**

37.12 Acres Total

NOTES		LEGEND	
Coordinates and bearings are on CCS 1927 Zone III. Distances and stationing are grid distances. Multiply by 1.0000668 to obtain ground distances. All distances are in feet unless otherwise noted.		PM	Postmile
		(R)	Radial Bearing
		Bk	Book/Reel/Vol
		Pg	Page/Image
DRAFTED BY	DATE	DISTRICT	COUNTY
SKR	09/05/2019	04	ALA
ROUTE	SHEET PM	SHEET NO.	TOTAL SHEETS
238	5.9x	2	3

STATE OF CALIFORNIA  
CALIFORNIA STATE TRANSPORTATION AGENCY  
DEPARTMENT OF TRANSPORTATION

**RIGHT OF WAY  
EXHIBIT "B" MAP**

**DD-034410-01-01**

COPYRIGHT 2019 CALIFORNIA DEPARTMENT OF TRANSPORTATION.  
ALL RIGHTS RESERVED.

SCALE: 1" = 500'

FEET 0 250 500 1000

NOTE: The State of California or its officers or agents shall not be responsible for the accuracy or completeness of digital images of this map.

LINE DATA TABLE						
NO.	BEARING	DISTANCE	Parcel	BK/PG	DEED BEARING	DEED DISTANCE
L1	N83°17'30"E	202.84'	39259	2551/770	N82°14'00"E	202.85'
L2	N78°35'30"E	172.03'	39259	2551/770	N77°32'00"E	172.04'
L3	S72°12'30"E	396.60'	39259	2551/770	S73°16'00"E	396.90'
L4	S16°18'30"W	297.37'	34410	2743/431	S15°15'00"W	
L5	S53°56'12"E	518.80'	34410	2743/431	S55°00'00"E	
L6	S73°59'10"E	276.60'				
L7	S73°59'10"E	48.10'				
L8	N16°05'26"E	48.00'				
L9	N16°05'26"E	1,018.34'	34410	2743/431	N15°01'00"E	
L10	N11°03'07"E	114.77'				
L11	N49°52'59"W	117.99'				
L12	N66°04'51"W	306.23'				
L13	N20°03'30"E	17.00'				
L14	S69°16'20"E	303.32'				
L15	N16°18'30"E	50.80'	39259	2551/770	N15°15'00"E	
L16	N69°56'30"W	737.02'	39259	2551/770	N70°49'00"W	737.48'
L17	S16°18'30"W	42.16'	39259	2551/770	S15°15'00"W	
L18	S16°18'30"W	313.89'	39259	2551/770	S15°15'00"W	
L19	S16°18'30"W	307.98'				
L20	S16°18'30"W	492.50'	39259	2551/770	S15°15'00"W	

CURVE DATA TABLE			
NO.	RADIUS	DELTA	LENGTH
C1	2,036.86'	19°47'52"	703.81'

NOTES	LEGEND
Coordinates and bearings are on CCS 1927 Zone III. Distances and stationing are grid distances. Multiply by 1.0000668 to obtain ground distances. All distances are in feet unless otherwise noted.	PM Postmile (R) Radial Bearing Bk Book/Reel/Vol Pg Page/Image

STATE OF CALIFORNIA  
CALIFORNIA STATE TRANSPORTATION AGENCY  
DEPARTMENT OF TRANSPORTATION  
**RIGHT OF WAY  
EXHIBIT "B" MAP**  
DD-034410-01-01  
COPYRIGHT 2019 CALIFORNIA DEPARTMENT OF TRANSPORTATION.  
ALL RIGHTS RESERVED.  
NO SCALE

DRAFTED BY	DATE	DISTRICT	COUNTY	ROUTE	SHEET PM	SHEET NO.	TOTAL SHEETS
SKR	08/22/2019	04	ALA	238	5.9x	3	3